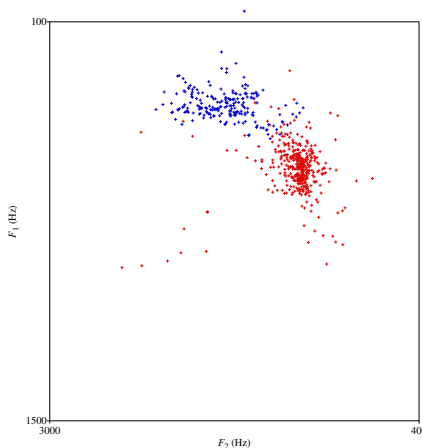
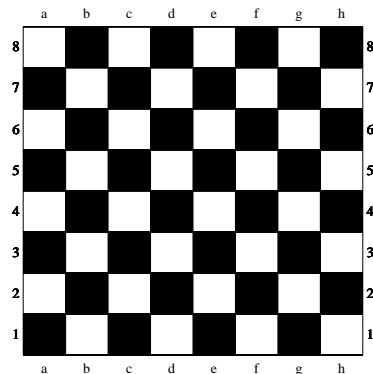


Automatic data processing with Praat

Deadline: 16.01.2008

5 Exercise

1. Write a script that draws the vowel quadrangle found on every IPA chart into the Picture Window. Use variables to simplify the placement of lines and symbols.
2. Write a script that draws a chessboard into the Picture Window. The output should look something like the left figure:



3. Write a script that iterates over every `aufnahme*.wav` in `sounds.zip`. For each Sound, create a Formant object using the default settings of `To Formant (burg)`.... Load the corresponding `TextGrid` from `TextGrids.zip` and analyze the vowels on tier 3 as follows:

For every vowel, use the `Scatter plot...` command on the Formant object (with default parameters, except for the time range, which should correspond to the respective vowel's start and end times). If the vowel is an /a/, have the plot show red marks, and blue marks otherwise.

All scatter plots for all recordings should be collected into a single graph, which should look like the figure on the right, above.

- Extra. Tweak the last script so that it automatically determines the optimal ranges for the F_1 and F_2 axes, depending on the data.